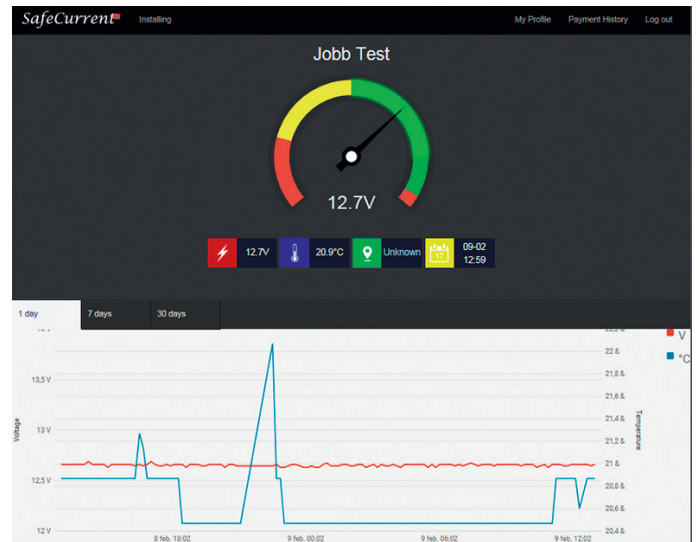


SafeCurrent[®]

The SafeCurrent battery monitoring system measures and reports parameters for voltage and temperature. Keeps track of the vehicle based on mobile triangulation.

Key features

- Remote monitoring of 12V/24V batteries. Read out voltage and local temperature on cellphones, pc and tablets. Monitored data refreshes every 4 hours.
- Get alerts by mail or SMS (optional) at low voltage, at start/charging, and at temperature changes between levels defined by user.
- Mobile triangulation tracks approximate position of the vehicle. This position shows up in a map-section available in user's My Page.
- One user account may retrieve data from several devices.
- Easy installation and registration. SIM card is included.
- Operates in all European countries.



Key specs

SafeCurrent SCMV 10-F1.0

GPRS module	<ul style="list-style-type: none"> • Quad-band 850/900/1800/1900MHz • GPRS multi-slot class 12/10 • GPRS mobile station class B • Compliant to GSM phase 2/2+ <ul style="list-style-type: none"> - Class 4 (2 W @ 850/900MHz) - Class 1 (1 W @ 1800/1900MHz) 	
Connection	Battery eyelets 6,3mm	Battery connection
	SMA (contact)	For gsm antenna
Power consumption	0.09mA	In standby
	350mA	Active for 15 sec.
Voltage	7V DC	Minimum
	30V DC	Max
Submission	4 hours	Max interval
IP class	44	